



PTD PA13

Power Transmission and Distribution

Power Automation

Power Quality

SIMEAS P

Updating the Firmware

Inhalt

1	Notes on Safety	3
2	How to Proceed	4

1 Notes on Safety

This manual does not constitute a complete catalog of all safety measures required for operating the respective equipment (module, device), since special operating conditions may require additional measures. However, it does contain notes which must be adhered to for your own personal safety and for avoiding property damage. These notes are highlighted with a warning triangle and different keywords indicating different degrees of danger:



Warning

means that death, severe injury or substantial property damage may occur if the appropriate safety measures are not taken.

Vorsicht

bedeutet, dass eine leichte Körperverletzung oder ein Sachschaden eintreten können, wenn die entsprechenden Vorsichtsmaßnahmen nicht getroffen werden.



Qualified Personnel

Commissioning and operation of the equipment (module, device) described in this manual must be performed by qualified personnel only. In the sense of the safety notes contained in this manual, qualified personnel are those persons who are authorized to commission, release, ground and tag devices, systems and electrical circuits in accordance with safety standards.

Use as Prescribed

The equipment (device, module) must not be used for any other purposes than those described in the Catalog and the technical description. If it is used together with third-party devices and components, these must be recommended or approved by Siemens. Correct and safe operation of the product requires adequate transportation, storage, installation and mounting as well as appropriate use and maintenance.

During operation of electrical equipment, it is unavoidable that certain parts of this equipment are carrying dangerous current. Severe injury or property damage may occur if the appropriate measures are omitted:

- Before making any connections at all, ground the equipment at the PE terminal.
- Hazardous voltages may be present on all switching components connected to the power supply.
- Even after the supply voltage has been disconnected, hazardous voltages may still be present in the equipment (capacitor storage).
- Equipment with current transformer circuits may not be operated while open.
- The limit values indicated in the manual or the operating instructions must not be exceeded; this also applies to testing and commissioning.

Disclaimer of liability

Although we have carefully checked the contents of this publication for conformity with the hardware and software described, we cannot guarantee complete conformity since errors cannot be excluded.

The information provided in this manual is checked at regular intervals and any corrections which might become necessary are included in the next releases. Any suggestions for improvement are welcome.

The contents of this manual is subject to change without prior notice.

Copyright

Copyright © Siemens AG 2002 All Rights Reserved

This document shall not be transmitted or reproduced, nor shall its contents be exploited or disclosed to third persons without prior written consent from Siemens. Infringements shall entitle to damage claims. All rights reserved, in particular in case of a patent grant or utility model registration.

Registered Trademarks

SIMEAS® is a registered trademark of SIEMENS AG. All other product and brand names in this manual may be trademarks, the use of which by third persons for their purposes may infringe the rights of their respective owners.

2 How to Proceed

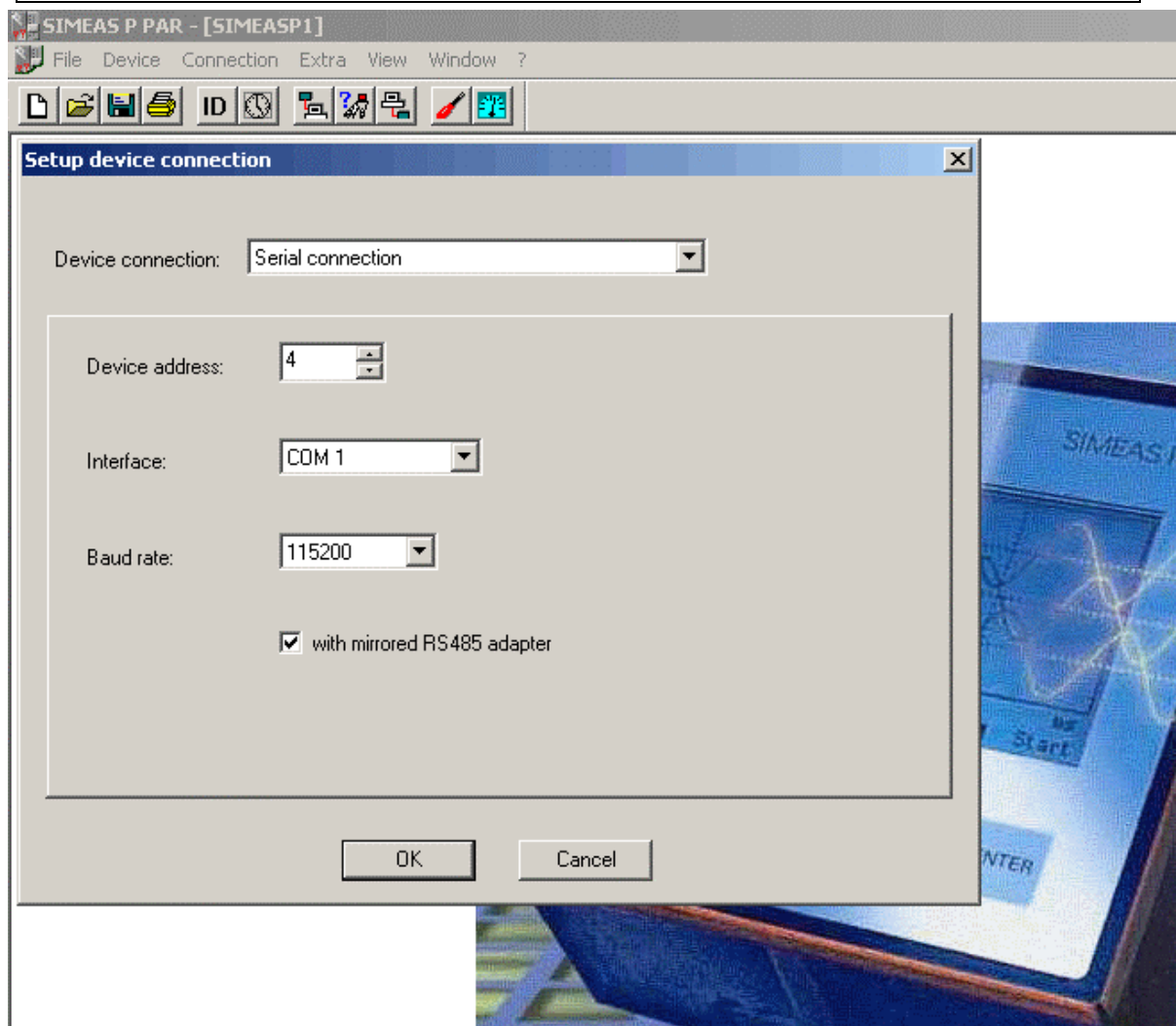
To update the firmware of the SIMEAS P proceed as follows:

1. Establish the connection to the device. Select the menu item **Connection** and set the following parameters:
 - a) Device connection (e.g. Serial connection)
 - b) Device address (Note: Address 0 is valid for all devices).
 - c) Interface
 - d) Baudrate
 - e) The adapter of the parameterization package is a mirrored adapter.

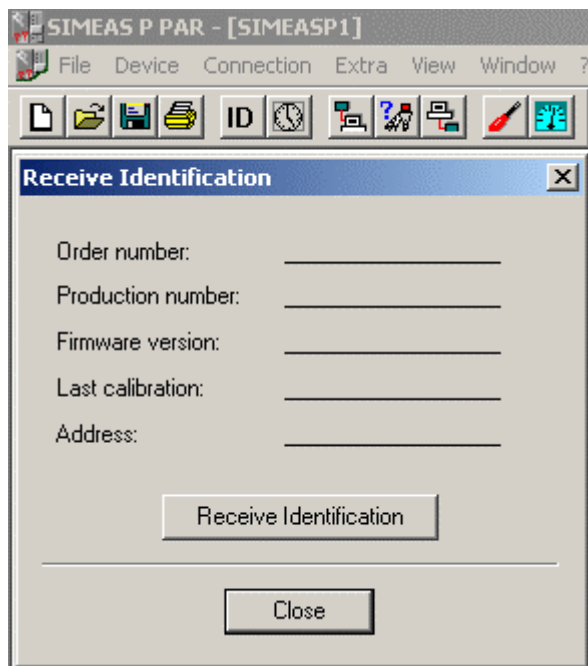


Caution!

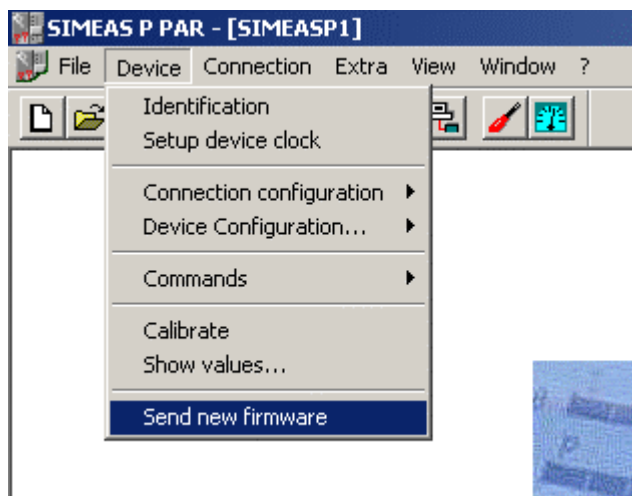
Please make sure to use the same parameter settings in the device and in the parameterization software. In the device, the serial interface must be set to „PC-RS 485“.



- To check the connection, receive the identification from the device. Click the button **ID**. A new dialog is displayed.
Click the button **Receive Identification**, to receive the data from the device. If your configuration is correct, the device data will be shown in the dialog.



- In the menu bar, select **Device**: The pulldown menu shows the item **Send new firmware**.



4. Select **Send new firmware** to display the **Send firmware** dialog. In this dialog, enter the path to the new firmware. The firmware is called 7KG7000.sx. Click the button **Send firmware**. The data transfer may take some minutes. Finally, receive the identification from the device once again (Button **ID**, refer to step 2). The new firmware version will be displayed.

