

AC-SCM1-BT



Local connection box

The connection box AC-SCM1-BT is an accessory for device of the series *COMPACTplus*. Sensors, buttons, switches and display elements can be connected here by a M12 cable. These signals are transferred via a 0,5 m long common cable with angled M12 plug to the local socket of the *COMPACTplus* receiver or transceiver. The common cable has to be mounted cross circuit safe. Except the green LED to display 24 VDC power supply, AC-SCM1-BT does not contain any electrical or electronical components and has thus no safety classification. The mounting of AC-SCM1-BT can be done with screw and sliding block:

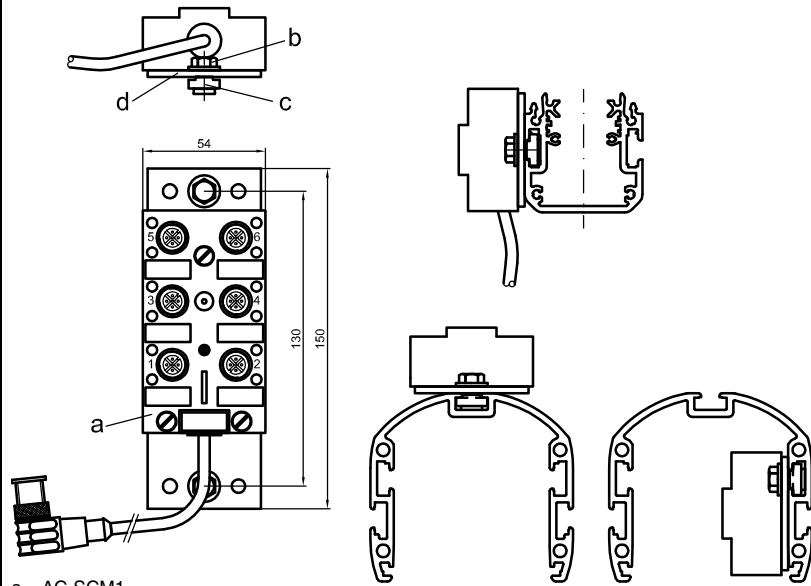
- on the side grooves of *COMPACTplus*
- the rear groove of DC/UDC device column
- at one of the inner grooves of DC/UDC device column.

Features

- Supply and signal voltage + 24 V DC
- Connection in M12 technology
- Simple connection to the *COMPACTplus* receiver or transceiver for example:
 - Muting sensors without testing
 - Muting indicator lamp (one or several of them, optionally)
 - Start button
 - 1- or 2-channel safety circuit

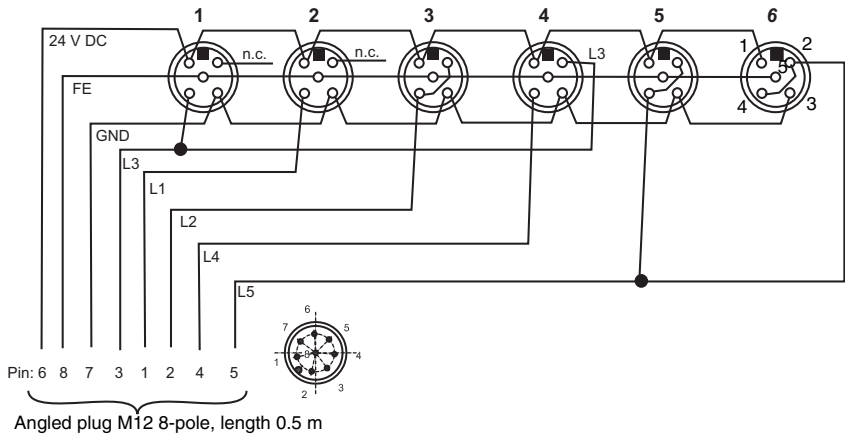
Leuze electronic GmbH + Co. KG
 In der Braike 1
 D-73277 Owen / Germany
 Phone: +49 (0) 7021 / 573-0
 Fax: +49 (0) 7021 / 573-199
 info@leuze.de
 www.leuze.com

Dimensional drawing



a = AC-SCM1
 b = Locking screw M6x10
 c = Sliding block
 d = Mounting plate

Internal wiring



Angled plug M12 8-pole, length 0.5 m

Technical data

power supply	+ 24 V DC ±20%
max. current	1 A
connection	6 sockets M12, 5-pole; 1 plug M12, 8-pole
isolation resistance	>10 ⁹ Ohm
protection degree	IP67
environmental temperature	-30 °C ... + 90 °C
housing	PA 6 GF 30
cable	PUR halogen free, color gray
housing color	black

Notes on Ordering

Type	Description	Art. no.
AC-SCM1-BT	Local connection box with mounting plate and mounting accessories	520068
AC-SCM1	Local connection box with M 12-Connection, for connection to local connecting socket	520065