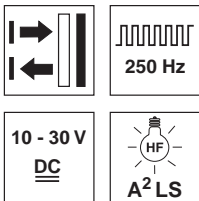


HRTR 25B "XL"

Diffuse reflection light scanner with background suppression

en 01-2011/03 50114830



0 ... 600mm
350mm with
black-white error < 10 %

- Visible red light, large light spot for exact, reliable edge detection – positioning on glossy, broken (perforated) metallic surfaces e. g. slide bolts
- Optimized light spot for detecting containers which are not completely closed (perforated boxes)
- An additional status display on the front side of the sensor makes possible place-saving alignment, optimum scanning range adjustment and rapid function control
- Ultra-simple integration into the existing control environment – large selection of switching outputs, activation input
- Minimal current consumption – reduction of energy consumption in standby operation
- A²LS – Active Ambient Light Suppression

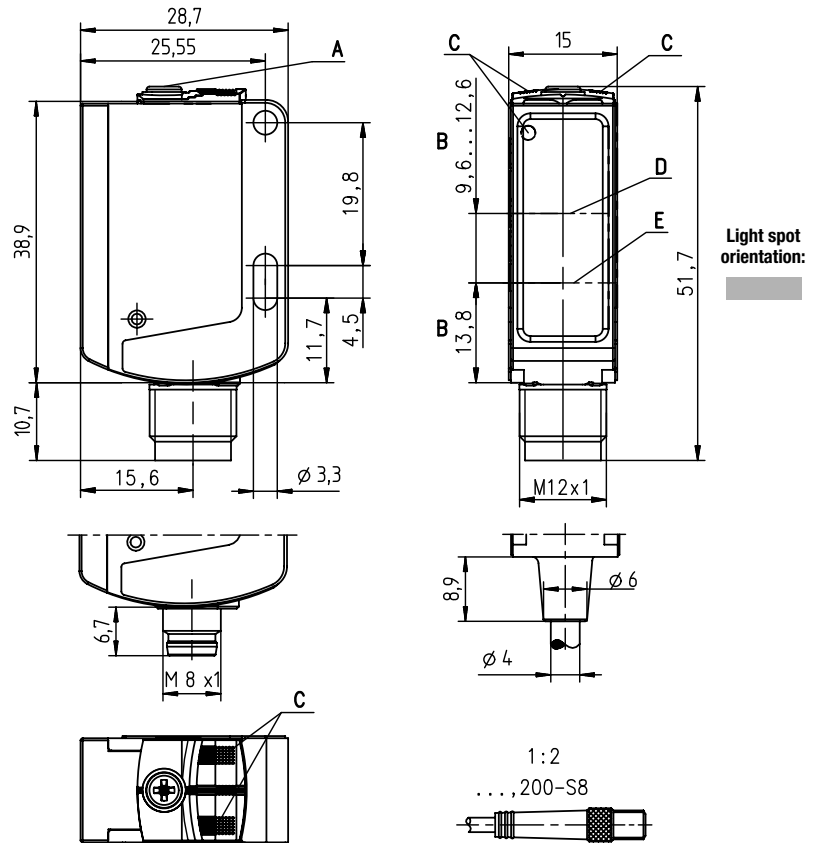
Accessories:



(available separately)

- Mounting systems (BT 25, UMS 25...)
- Cable with M8 or M12 connector (K-D ...)

Dimensioned drawing



- A** Scanning range adjustment
- B** Optical axis
- C** Indicator diode
- D** Receiver
- E** Transmitter

Electrical connection

Connector, 4-pin

U _B	1	br / BN
OUT / IN ^{*)}	2	ws / WH
GND	3	bl / BU
OUT1	4	sw / BK

Cable, 4 wires

U _B	1	br / BN
OUT / IN ^{*)}	2	ws / WH
GND	3	bl / BU
OUT1	4	sw / BK

Selection pin 2

*)	OUT	IN
	OUT 2	active
	not connected (n.c.)	

Specifications

Optical data

Typ. scanning range limit ¹⁾	0 ... 600mm
Scanning range ²⁾	see tables
Adjustment range ¹⁾	50 ... 600mm
Black/white error < 10 %	up to 350mm
Light beam characteristic	divergent, rectangular
Light beam dimensions	approx. 10mm x 15mm at a distance of 50mm, approx. 10mm x 20mm at a distance of 100mm, approx. 15mm x 35mm at a distance of 200mm, approx. 15mm x 40mm at a distance of 300mm
Light source ³⁾	LED (modulated light)
Wavelength	620nm (visible red light)

Timing

Switching frequency	250Hz
Response time	2ms
Delay before start-up	≤ 300ms (acc. to. IEC 60947-5-2)

Electrical data

Operating voltage U_B ⁴⁾	10 ... 30VDC (incl. residual ripple)
Residual ripple	≤ 15% of U_B
Open-circuit current	≤ 15mA
Switching output .../66 ⁵⁾	2 push-pull switching outputs pin 2: PNP dark switching, NPN light switching pin 4: PNP light switching, NPN dark switching
.../6 ⁵⁾	1 push-pull switching output pin 4: PNP light switching, NPN dark switching
.../44	2 PNP switching outputs, complementary
.../4	1 PNP switching output light switching, pin 2: not connected ⁶⁾
.../4D	1 PNP switching output dark switching, pin 2: not connected ⁶⁾
.../2	1 NPN switching output light switching, pin 2: not connected ⁶⁾
Function characteristics	light/dark switching
Signal voltage high/low	≥ ($U_B - 2V$) / ≤ 2V
Output current	max. 100mA
Scanning range	adjustable via 10-turn potentiometer

Indicators

Green LED	ready
Yellow LED	object detected - reflection

Mechanical data

Housing ⁷⁾	plastic (PC-ABS)
Optics cover	plastic (PMMA)
Weight	with connector: 15g with 200mm cable and connector: 30g with 2m cable: 55g
Connection type	cable 2m (cross section 4x0.20mm ²), connector M8 or M12, cable 0.2m with connector M8 or M12

Environmental data

Ambient temp. (operation/storage)	-30°C ... +60°C / -30°C ... +60°C
Protective circuit ⁸⁾	2, 3
VDE safety class ⁹⁾	II
Protection class	IP 66, IP 67
Light source	free group (in accordance with EN 62471)
Standards applied	IEC 60947-5-2
Certifications	UL 508 ⁴⁾

Options

Activation input active	
Transmitter active/not active	≥ 8V / ≤ 2V
Activation/disable delay	≤ 1ms
Input resistance	10KΩ ± 10 %

- 1) Typ. scan. range limit/adjustment range: max. achievable scanning range/adjustment range for light objects (white 90 %)
- 2) Scanning range: recommended scanning range for objects with different diffuse reflection
- 3) Average life expectancy 100,000h at an ambient temperature of 25°C
- 4) For UL applications: for use in class 2 circuits according to NEC only
- 5) The push-pull switching outputs must not be connected in parallel
- 6) Pin 2: unassigned, hence especially suitable for the connection to AS-interface I/O coupling modules
- 7) Patent Pending Publ. No. US 7,476,848 B2
- 8) 2=polarity reversal protection, 3=short-circuit protection for all transistor outputs
- 9) Rating voltage: 50V

Tables

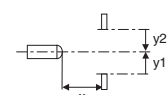
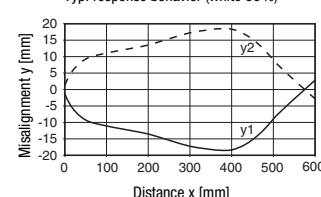
1	0	600
2	5	500
3	5	450

1	white 90%
2	grey 18%
3	black 6%

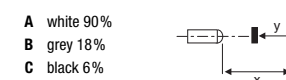
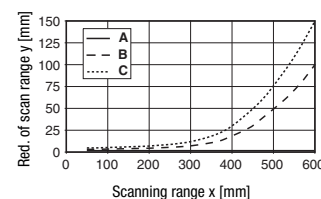
☐ Scanning range [mm]

Diagrams

Typ. response behavior (white 90%)



Typ. black/white behavior



Remarks

- **Approved purpose:**
This product may only be used by qualified personnel and must only be used for the approved purpose. This sensor is not a safety sensor and is not to be used for the protection of persons.

HRTR 25B "XL" Diffuse reflection light scanner with background suppression

Part number code

H	R	T	R	2	5	B	/	6	6	.	8	-	X	L	,	2	0	0	-	S	1	2
---	---	---	---	---	---	---	---	---	---	---	---	---	---	---	---	---	---	---	---	---	---	---

Operating principle

HRT Diffuse reflection light scanners with background suppression

Operating principle

N/A Infrared light

R Red light

Construction/version

25B 25B Series

Switching output/function (OUT 1: pin 4, OUT 2: pin 2)

/66 2 x push-pull transistor output, OUT 1: light switching, OUT 2: dark switching
/6 1 x push-pull transistor output, OUT 1: light switching, OUT 2: not connected (n. c.)
/44 2 x PNP transistor output, OUT 1: light switching, OUT 2: dark switching
/4 1 x PNP transistor output, OUT 1: light switching, OUT 2: not connected (n. c.)
/4D 1 x PNP transistor output, OUT 1: dark switching, OUT 2: not connected (n. c.)
/2 1 x NPN transistor output, OUT 1: light switching, OUT 2: not connected (n. c.)

Equipment

.8 Activation input

Light spot

N/A Standard light spot
-S Small light spot
-XL Elongated light spot

Electrical connection

N/A Cable, PVC, standard length 2000mm, 4-wire
-S8 M8 connector, 4 pin (plug)
-S12 M12 connector, 4 pin (plug)
,200-S8 Cable, PVC, length 200mm with M 8 connector, 4 pin, axial (plug)
,200-S8.1 Cable, PVC, 200 mm length with M 8 connector, 4-pin, axial (plug),
 NM construction with snap locking in accordance with IEC 61076-2-101
,200-S12 Cable, PVC, length 200mm with M 12 connector, 4 pin, axial (plug)

Order guide

The sensors listed here are preferred types; current information at www.leuze.com

Order code

Part No.

HRTR 25B/66-XL-S12	50114876
HRTR 25B/66-XL,200-S8	50115157
HRTR 25B/66-XL,200-S12	50115158
HRTR 25B/4D-XL-S12	50115139
HRTR 25B/6.8-XL-S12	50115143

Application notes



- For glossy surfaces (e.g. metals), the light beam should not be incident on the object surface at a right angle. A slight inclination is sufficient for preventing undesired direct reflections. This may result in a reduction in the scanning range.
- Objects should only be moved in laterally from the right or left. Moving in objects from the connector side or operating side is to be avoided.
- Outside of the scanning range, the sensor operates as an energetic diffuse reflection light scanner. Light objects can still be reliably detected up to the scanning range limit.
- The sensors are equipped with effective measures for the maximum avoidance of mutual interference should they be mounted opposite one another. Opposite mounting of multiple sensors of the same type should, however, absolutely be avoided.