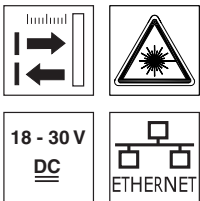


LES 36 HI

Light section sensor for object measurement

en 01-2013/03 50122330



200 ... 600mm

- Light section sensor for object measurement (width, height and position measurement)
- Measurement time 10ms
- Measurement range: 200 ... 600mm
- Length of laser line: max. 140mm
- Integrated analog interface
- Configuration via Fast Ethernet
- OLED display with key pad for alignment aid and status display: "set inspection task"
- Measurement value display in mm on OLED display as an alignment aid
- Up to 4 measurement fields / 8 detection fields with logic operation option
- Up to 16 inspection tasks
- Activation input, trigger input, cascading output

We reserve the right to make changes • DS_LES36HI_en_50122330.fm

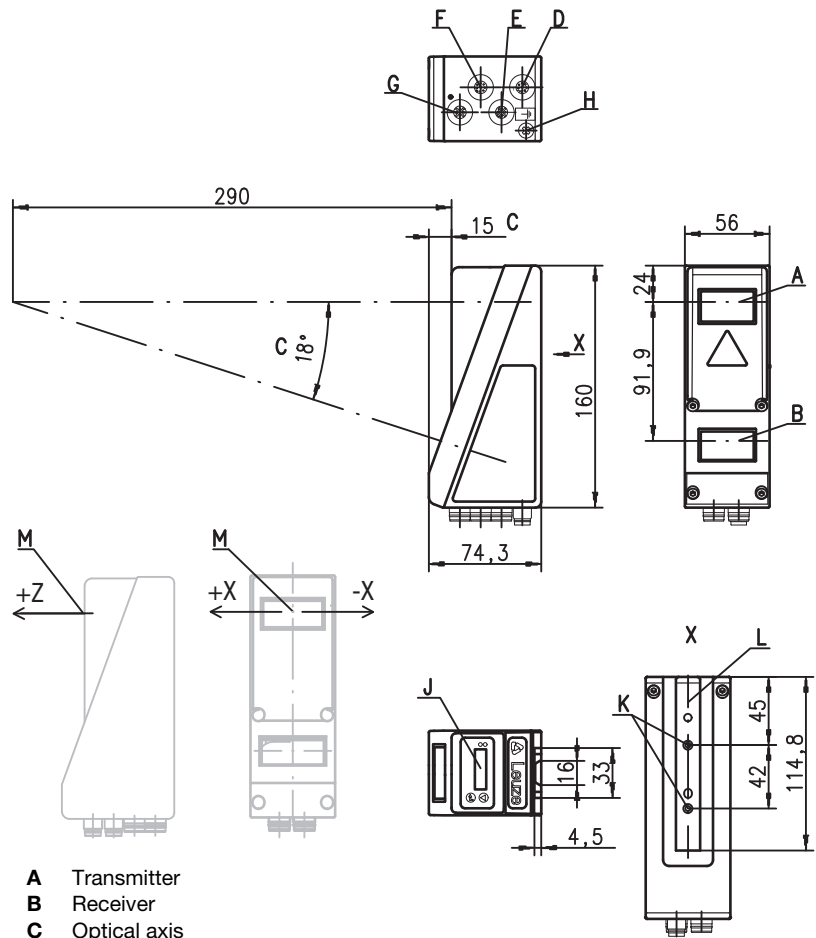


Accessories:

(available separately)

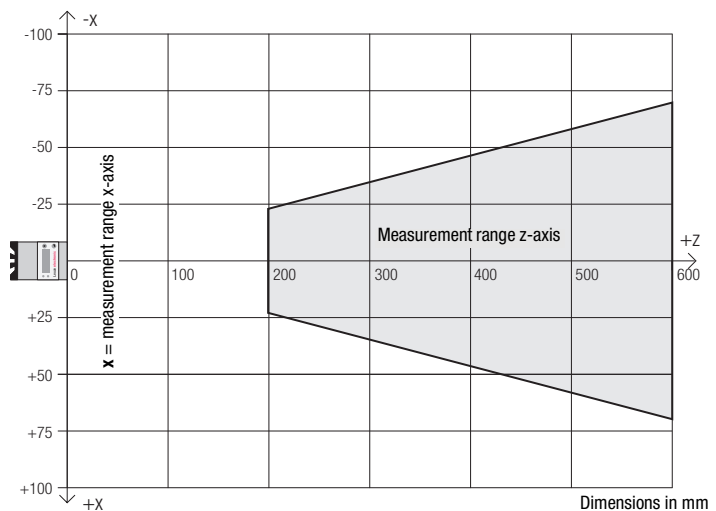
- Mounting systems BT 56, BT 59
- Cable with M12 connector (K-D ...)

Dimensioned drawing



- A** Transmitter
- B** Receiver
- C** Optical axis
- D** X1: M12x1 connector, 8-pin, A coded
- E** X2: M12x1 socket, 4-pin, D coded
- F** X3: M12x1 socket, 8-pin, A coded (LES 36 HI/VC6)
- G** X4: M12x1 socket, 5-pin, A coded (LES 36 HI/VC6)
- H** FE screw
- J** OLED display and membrane keyboard
- K** M4 thread, 4.5 deep
- L** Holder for mounting system BT 56 / BT 59
- M** Zero point and orientation of the coordinate system for measurement data

Measurement range, typical



Specifications

Optical data

Measurement range ¹⁾	200 ... 600mm (z direction)
Light source	laser
Wavelength	658nm (visible red light)
Max. output power	< 8mW
Pulse duration	< 3ms (adjustable from 0.1 ms ... 1.31ms)
Laser line	approx. 170x1.5mm at 600mm

Error limits (relative to measurement distance)

Resolution in x direction ^{2) 3)}	0.2 ... 0.6mm
Resolution in z ²⁾ direction ³⁾	0.1 ... 0.9mm
Linearity in z direction ³⁾	≤ ±0.5%
Repeatability in z direction ³⁾	≤ 0.25%
B/W detection thresh. (6 ... 90% rem.)	≤ 0.5%

Object detection

Minimum object size in x direction ⁴⁾	0.6 ... 2mm
Minimum object size in z direction ²⁾	0.4 ... 3mm

Timing

Measurement time	≥10ms (configurable)
Delay before start-up	approx. 1.5s

Electrical data

Operating voltage U_B ⁵⁾	18 ... 30VDC (incl. residual ripple)
Residual ripple	≤ 15% of U_B
Open-circuit current	≤ 200mA
Ethernet interface	UDP
Switching outputs	4 / 100mA / push-pull ⁶⁾ on X3 (LES 36 HI/VC6 only) 1 (ready) / 100mA / push-pull ⁶⁾ on X1 1 (cascading) / 100mA / push-pull ⁶⁾ on X1
Inputs	3 (selection of inspection task) on X3 (LES 36 HI/VC6 only) 1 (trigger) on X1 1 (activation) on X1
Signal voltage high/low	≥ ($U_B - 2V$) / ≤ 2V

Analog output (only LES 36 HI/VC6)

Analog output	voltage 1 ... 10V, $R_L \geq 2k\Omega$ current 4 ... 20mA, $R_L \leq 500\Omega$
---------------	--

Indicators

Green LED	continuous light	ready
	off	no voltage
Yellow LED	continuous light	Ethernet connection available
	flashing	Ethernet data transmission active
	off	no Ethernet connection available

Mechanical data

Housing	aluminum frame with plastic cover
Optics cover	glass
Weight	620g
Connection type	M12 connector

Environmental data

Ambient temp. (operation/storage)	-30°C ... +50°C / -30°C ... +70°C
Protective circuit ⁷⁾	1, 2, 3
VDE safety class	III, protective extra-low voltage
Protection class	IP 67
Laser class	2M (according to EN 60825-1 and 21 CFR 1040.10 with Laser Notice No. 50)
Standards applied	IEC/EN 60947-5-2, UL 508

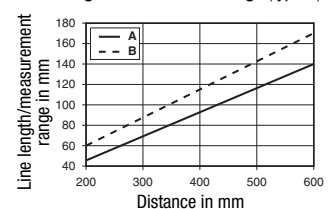
- 1) Luminosity coefficient 6% ... 90%, entire detection range, at 20°C after 30minutes warmup time, medium range U_B
- 2) Minimum and maximum value depend on measurement distance
- 3) Reflectivity 90%, identical object, identical environment conditions, measurement object $\geq 50 \times 50 \text{mm}^2$
- 4) Minimum value, depends on distance and object, requires testing under application conditions
- 5) For UL applications: for use in class 2 circuits according to NEC only
- 6) The push-pull switching outputs must not be connected in parallel
- 7) 1=transient protection, 2=polarity reversal protection, 3=short circuit protection for all outputs, requires external protective circuit for inductive loads

Tables

LED	State	Display during measurement operation
green	continuous light	Sensor ready
	off	Sensor not ready
yellow	continuous light	Ethernet connection established
	flashing	Ethernet data transmission active
	off	No Ethernet connection

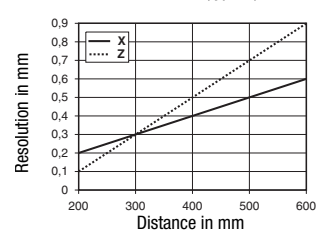
Diagrams

Line length/measurement range (typical)



A Measurement range
B Line length

Resolution (typical)



Remarks

- Approved purpose:**
 This product may only be used by qualified personnel and must only be used for the approved purpose. This sensor is not a safety sensor and is not to be used for the protection of persons.
- Warmup time:**
 After a warmup time of 30 min., the light section sensor has reached the operating temperature required for an optimum object measurement.
- For UL:**
 CAUTION – Use of controls or adjustments or performance of procedures other than specified herein may result in hazardous light exposure.

LES 36 HI

Light section sensor for object measurement

Interface assignments

X1 - logic and power		
Pin No.	Signal	Color
1	+24VDC	WH
2	InAct (activation)	BN
3	GND	GN
4	OutReady (ready)	YE
5	InTrig (trigger)	GY
6	OutCas (cascading)	PK
7	do not connect	BU
8	do not connect	RD

8-pin M12 plug, A coded

X2 - Ethernet		
Pin No.	Signal	Color
1	Tx+	YE
2	Rx+	WH
3	Tx-	OR
4	Rx-	BU

4-pin M12 socket, D coded

X3 - logic (LES 36 HI/VC6 only)		
Pin No.	Signal	Color
1	Out4	WH
2	Out3	BN
3	GND	GN
4	Out2	YE
5	Out1	GY
6	InSel3 ¹⁾	PK
7	InSel2 ¹⁾	BU
8	InSel1 ¹⁾	RD

8-pin M12 socket, A coded

X4 - Analog Out			
Pin No.	Signal	Explanation	Color
1	n.c.	Not connected	BN
2	4-20mA	Analog current output	WH
3	AGND	Reference potential	BU
4	1-10V	Analog voltage output	BK
5	FE	Functional earth	GY

5-pin M12 socket, A coded

1) The three InSel1-3 switching inputs are used to select inspection tasks 0-7. "000" means inspection task 0, "001" inspection task 1, etc. The changeover time between two inspection tasks is < 100ms

Order guide


Part no.	Designation	Line Range Sensor
50111329	LES 36HI/VC6	with analog voltage/current output and binary inputs/outputs

Configuration - Establish connection to PC

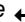

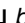
The LES is configured via a PC using the **LESsoft** program before it is integrated into the process control.


In order to be able to establish an UDP communication with the PC, the IP address of your PC and the IP address of the LES must lie in the same address range. The LES has no built-in DHCP client, so that you need to set the address manually. This is done the easiest way via the PC.

Notice!

 If you are using a desktop firewall, please ensure that the control can communicate with the LES via the Ethernet interface on ports 9008 and 5634 using UDP. Furthermore, the firewall must allow ICMP echo messages to pass through for the connection test (ping).

If the PC is usually connected to a network using DHCP address allocation, the easiest way to access the LES is by applying an alternative configuration in the TCP/IP settings of the PC and connecting the LES directly to the PC.

☞ Check the network address of the LES by pressing the  button during normal operation of the LES twice in succession, then by pressing  twice and followed by pressing the  button again.

This will take you to the Ethernet submenu and enable you to read the current settings of the LES consecutively when pressing  repeatedly.

☞ Make a note of the values for IP-Address and Net Mask Addr..

The value in Net Mask Addr. specifies which digits of the IP address of the PC and LES must match so that they can communicate with each other.

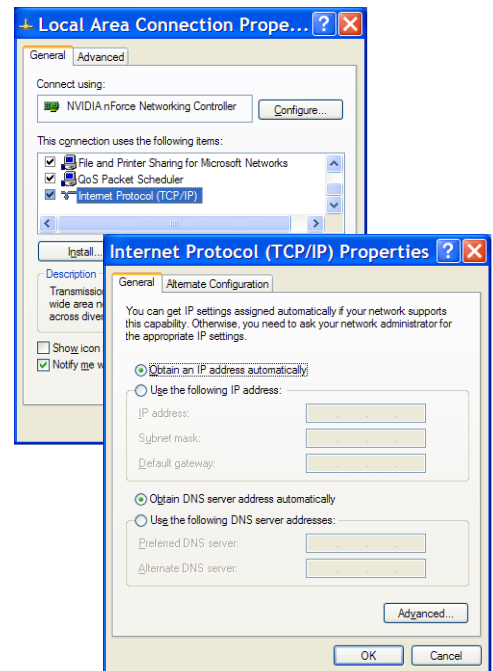
Address of the LES	Net mask	Address of the PC
192.168.060.003	255.255.255.0	192.168.060.xxx
192.168.060.003	255.255.0.0	192.168.xxx.xxx

Instead of **xxx** you can now allocate any numbers between 000 and 255 to your PC, but NOT THE SAME numbers as contained in the address of the LES.

For example 192.168.060.110 (but not 192.168.060.003!). If LES and PC have the same IP address, they cannot communicate with each other.

Configuring the IP address for a PC

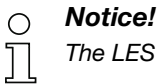
- ☞ Log in to your PC as an administrator.
- ☞ Using Start->System control go to the Network connections (Windows XP) menu or to the Network center and release center (Windows Vista) menu.
- ☞ There select the LAN connection and bring up the associated Features page by right clicking with the mouse.
- ☞ Select the Internet protocol (TCP/IP) (by scrolling down, if necessary) and click on Properties.
- ☞ In the Internet protocol (TCP/IP) Properties window select the Alternate configuration tab.
- ☞ Configure the IP address of the PC in the address range of the LES.
Attention: do not use the same as for the LES!
- ☞ Set the Subnet mask of the PC to the same value as the one for the LES.
- ☞ Close the configuration dialog by confirming all windows using OK.
- ☞ Connect the interface X2 of the LES directly to the LAN port of your PC. Use a KB ET-...-SA-RJ45 cable for the connection.



The PC will first try to establish a network connection via the automatic configuration. This will take a few seconds. Following that the alternative configuration, which you have just set up, is activated, and thus the PC can communicate with the LES.

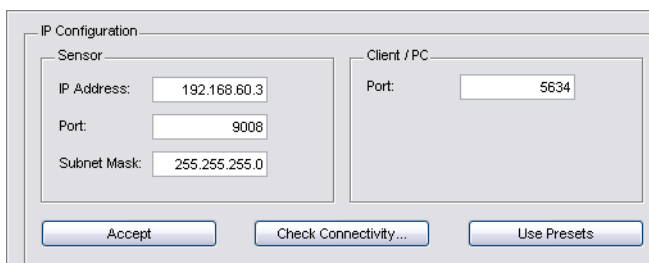
Information about configuring the LES using **LESsoft** software can be found in the Technical Description.

Commissioning



Notice!
The LES 36HI/VC6, like all other models, is configured via Ethernet with the **LESsoft** software.

1. Configuring the LES - see chapter 8 of the Technical Description.
2. Programming process control - see chapter 9 of the Technical Description.
or
3. Connecting the switching inputs and outputs accordingly - see chapter 6 of the Technical Description.
4. Adapt the IP configuration of the LES via the display in such a way that it can communicate with LESsoft.
Here you can change network address and associated net mask as well as the ports via which the LES communicates with process control. The values set via the display are not accepted immediately; they are not effective until the sensor is switched on again.
5. You can check the connection by entering the IP address data into **LESsoft** in the IP Configuration area and clicking on the Check Connectivity button.



6. Configure LES with **LESsoft**.
7. Connect LES to the process control.
8. Establish connections for activation, triggering and cascading, if necessary.

Installing the configuration software

System requirements

The PC used should meet the following requirements:

- Pentium® or faster Intel® processor > 1.5 GHz (Pentium 4, Celeron, Xeon) or compatible models by AMD® (Athlon 64, Opteron, Sempron). The processor must support the SSE2 instruction set.
- At least 512 MB free main memory (RAM), 1024 MB recommended
- CD-ROM drive
- Hard disk with at least 1 GB available memory.
- Ethernet port
- Microsoft® Windows XP SP2/3 / Vista SP1 (32 bit)

Installation procedure



Notice!

If present, uninstall Matlab Runtime before beginning with the installation of the LXSSoft Suite.

The LXSSoft_Suite_Setup.exe installation program is located on the supplied CD.



Notice!

Copy this file from the CD to an appropriate folder on your hard drive.

Administrator privileges are required for the next steps.

☞ *To start the installation process, double-click on file LXSSoft_Suite_Setup.exe.*

☞ *In the first window, click on Next.*

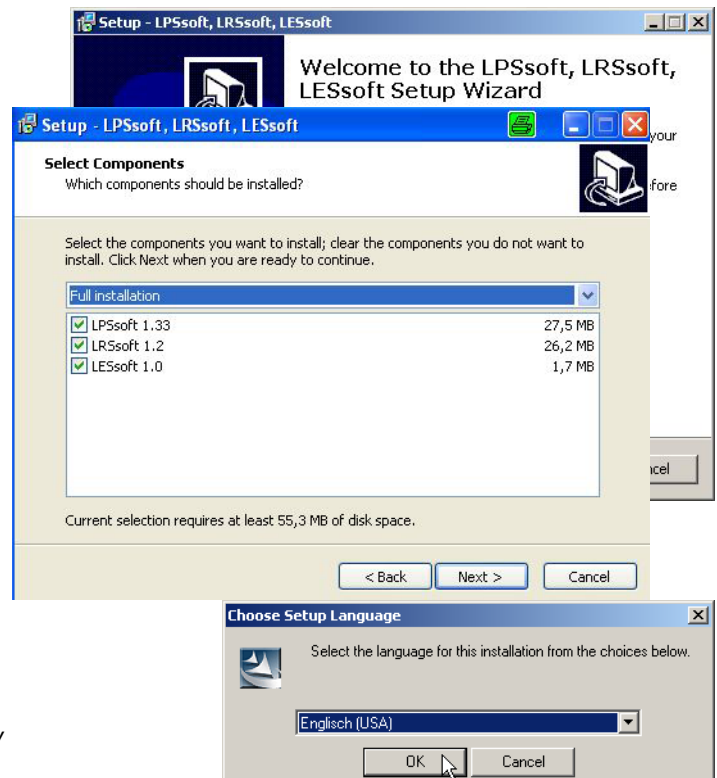
In the next window, you can select whether you would like to install **LESsoft** only, or **LPSsoft** and **LRSsoft** in addition.

You will need **LPSsoft** and **LRSsoft** in addition for configuring light section sensors of the LPS or LRS series with your PC.

☞ *Select the desired options and click on Next and, in the next window, click on Install.*

The installation routine starts. After a few seconds, the window for selecting the installation language for the Matlab Compiler Runtime (MCR) appears. The MCR is used for 3D visualization. It is only available in English or Japanese.

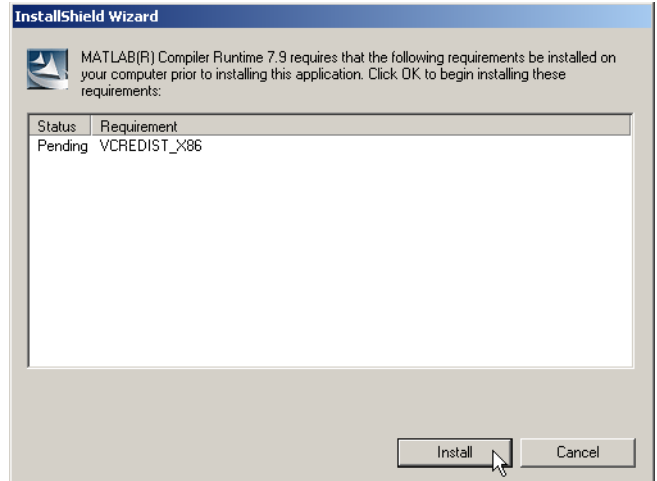
☞ *Therefore keep in the Choose Setup Language window the selection English and click on OK.*



Depending on the configuration of your Windows system the adjacent dialog can also appear (missing component VCREDIST_X86).

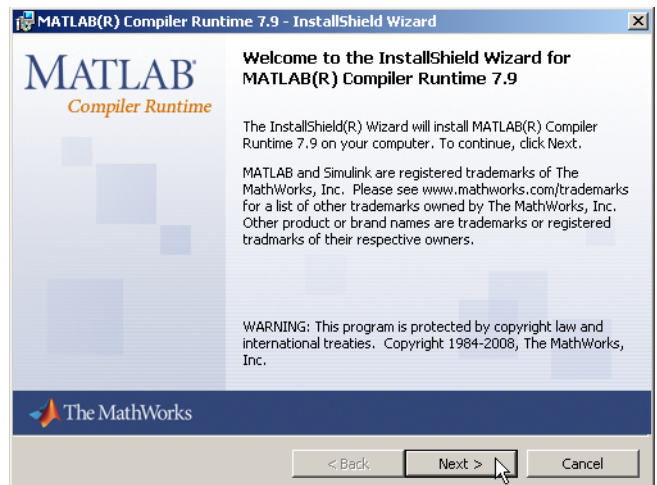
☞ *Click on Install*

Two additional installation windows will appear, which do not require any further entry.



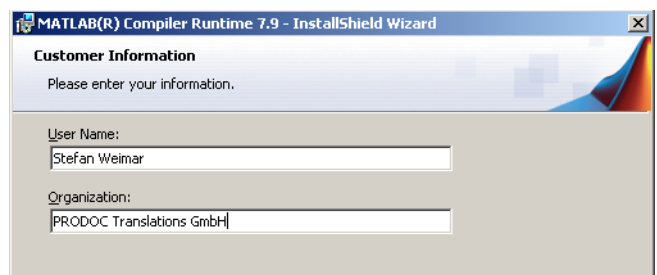
After some time (up to several minutes depending on the system configuration) the start screen of the MCR installer will appear.

☞ *Click on Next.*



The window for entering user data appears.

☞ *Enter your name and the company name and then click on Next.*

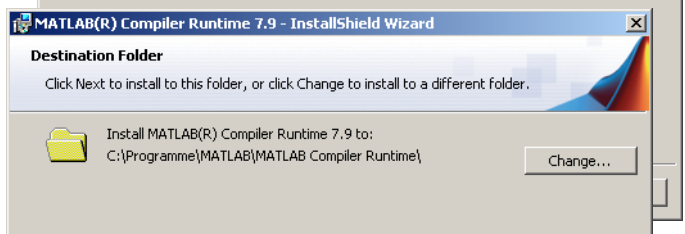


☞ *It is essential that you retain the default folder in the window for the selection of the installation path (Destination Folder).*

The standard path is

C:\Programs\MATLAB\MATLAB Compiler Runtime\.

☞ *Click on Next and in the next window click on Install.*



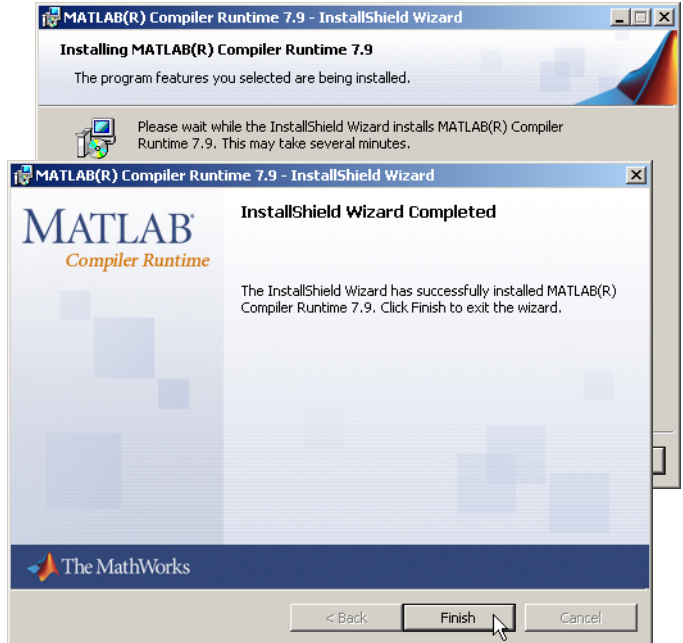
LES 36 HI

Light section sensor for object measurement

The installation will start and the adjacent status window will be displayed. This can again take several minutes.

Following successful MCR installation, the InstallShield Wizard Completed window appears.

☞ *Click on Finish to end the MCR-installation.*

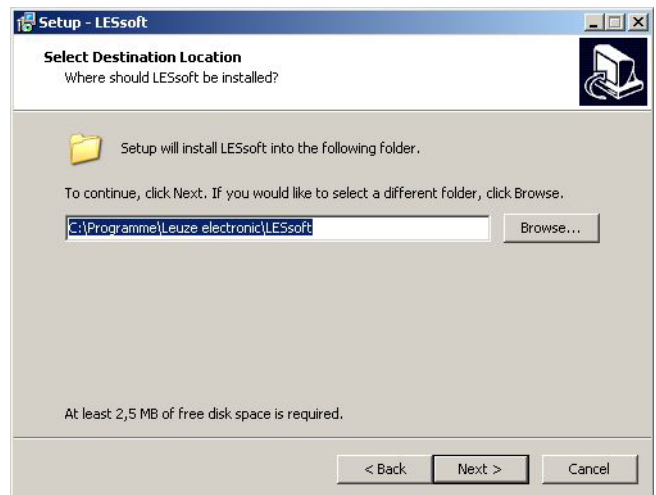


The window for selecting the installation path for **LESsoft** now appears.

☞ *Keep the default folder and click on Next.*

The installation of **LESsoft** starts. If you also selected **LPSsoft** and **LRSsoft** for installation, upon completion of the **LESsoft** installation, the same window then reappears for entering the installation path for **LPSsoft** and **LRSsoft**.

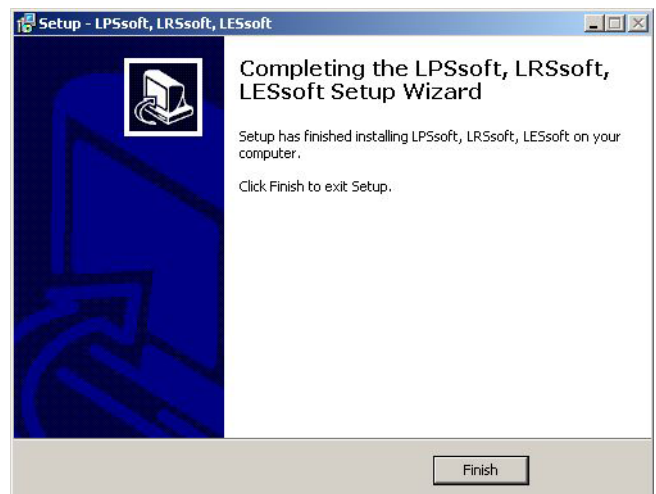
☞ *Keep the default folder in this case as well and click on Next.*



Upon completion of the installation process, the adjacent window appears.

The installation routine added a new **Leuze electronic** program group in your start menu that contains the installed programs **LESsoft** and, if selected, **LPSsoft** and **LRSsoft**.

☞ *Click on Finish and then start the desired program from the Start menu.*



Possible error message

Depending on the system configuration the adjacent error message can appear at this point.

The cause of this error message is a bug in the MCR installation routine, which does not set the environment variable `Path` correctly in some systems.



That, however, can easily be corrected without reinstallation of the MCR.

➤ *Open the System properties window located in the System control of Windows under System.*

➤ *Go to the Advanced tab and click on Environment variables.*

The Environment variables window opens.

➤ *Scroll down in the System variables area until you find the Path entry.*

➤ *Click on Path and then on Edit*

The Edit system variable window opens.

There in the Variable value field you will find the `;C:\Programs\MATLAB\MATLAB Compiler Runtime\v79\runtime\win32` entry right at the end.

➤ *If this entry is missing, copy the entry from this document and insert it together with the preceding semi-colon.*

➤ *Then click on OK and close also all further windows using OK.*

➤ *Shut Windows down, restart Windows and then start **LESsoft** by double-clicking on it.*

Now the start screen of **LESsoft** appears, as described in chapter 8 of the LES technical description.

