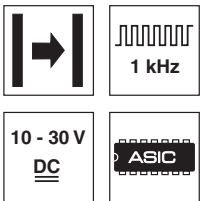


LSR 3B

Throughbeam photoelectric sensors

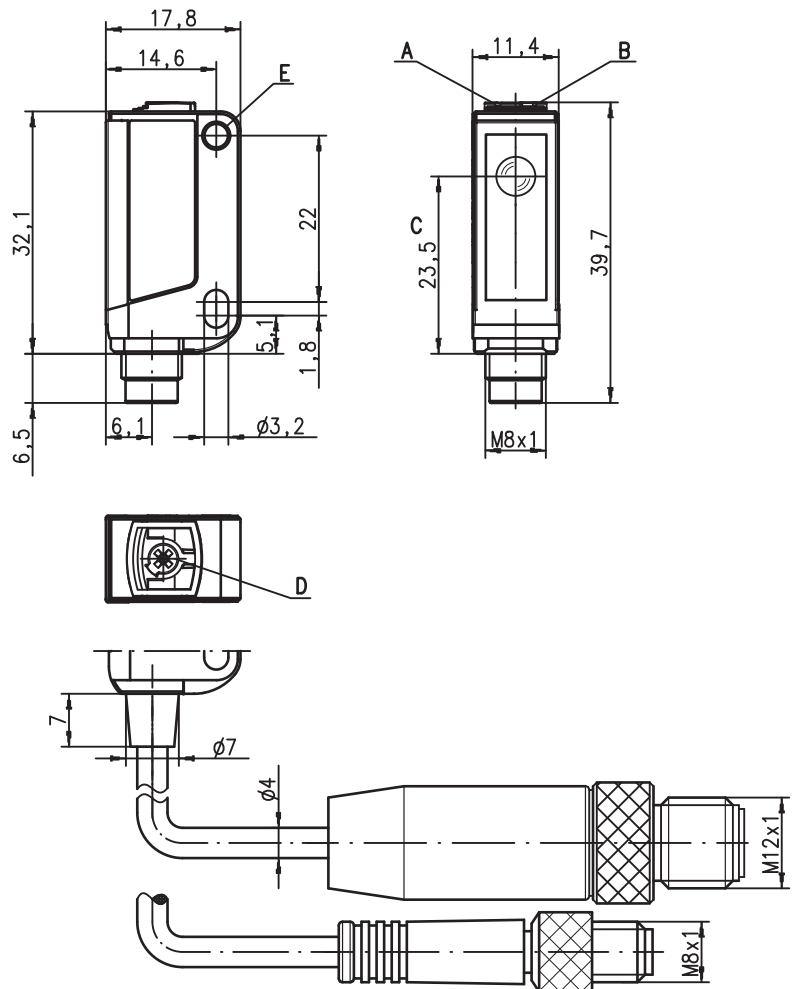
en 03-2013/08 50108961



0 ... 10m

- Throughbeam photoelectric sensor with visible red light
- High performance reserve
- Small and compact construction with robust plastic housing, protection class IP 67 for industrial application
- Fast alignment through *brightVision*®
- Push-pull switching outputs
- High switching frequency for detection of fast events
- Warning output for increased availability
- Activation input

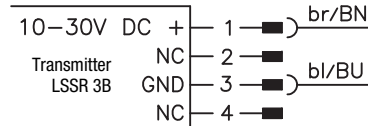
Dimensioned drawing



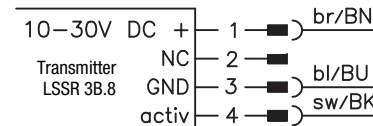
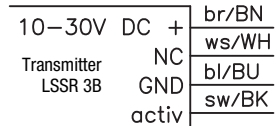
- A Green indicator diode
- B Yellow indicator diode
- C Optical axis
- D Potentiometer for operating range adjustment (LSR 3B/66.1... only)
- E Attachment sleeve

Electrical connection

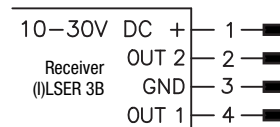
Plug connection, 4-pin



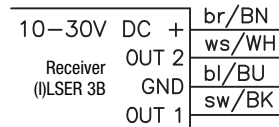
Cable, 4-wire



Plug connection, 4-pin



Cable, 4-wire



Accessories:

(available separately)

- Mounting systems (BT 3...)
- Cable with M8 connector (K-D ...)
- Reflectors
- Reflective tapes

We reserve the right to make changes • DS_LSR3B_en_50108961.fm



Specifications

Optical data

Typ. operating range limit ¹⁾	0 ... 10m
Operating range ²⁾	0.05 ... 8.5m
Light source ³⁾	LED (modulated light)
Wavelength	620nm (visible red light)

Timing

Switching frequency	1,000Hz (see order guide)
Response time	0.5ms
Delay before start-up	≤ 300ms

Electrical data

Operating voltage U_B ⁴⁾	10 ... 30VDC (incl. residual ripple)
Residual ripple	≤ 15% of U_B
Open-circuit current	≤ 14mA (per sensor)
Switching output	.../66 ⁵⁾ 2 push-pull switching outputs pin 2: PNP dark switching, NPN light switching pin 4: PNP light switching, NPN dark switching .../6 ⁵⁾ 1 push-pull switching output pin 4: PNP light switching, NPN dark switching light/dark switching
Function characteristics	permanently set or adjustable, see order guide
Signal voltage high/low	≥ ($U_B - 2V$) / ≤ 2V
Output current	max. 100mA
Operating range	

Indicators

Green LED	ready
Yellow LED	light path free
Yellow LED, flashing	light path free, no performance reserve

Mechanical data

Housing ⁶⁾	plastic (PC-ABS); 1 attachment sleeve, nickel-plated steel
Optics cover	plastic (PMMA)
Weight	with connector: 10g with 200mm cable and connector: 20g with 2m cable: 50g
Connection type	2m/5m cable (cross section 4x0.20mm ²), connector M8 metal, 0.2m cable with connector M8

Environmental data

Ambient temp. (operation/storage)	-30°C ... +55°C / -30°C ... +70°C
Protective circuit ⁷⁾	2, 3
VDE safety class	III
Protection class	IP 67
Light source	free group (in accordance with EN 62471)
Standards applied	IEC 60947-5-2
Certifications	UL 508 ⁴⁾

Options

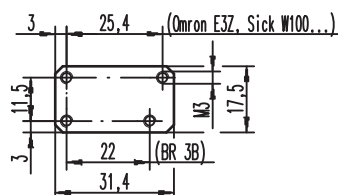
Warning output autoControl warn	PNP transistor, counting principle
Signal voltage high/low	≥ ($U_B - 2V$) / ≤ 2V
Output current	max. 100mA
Activation input active	
Transmitter active/not active	≥ 8V / ≤ 2V
Activation/disable delay	≤ 1ms
Input resistance	10KΩ ± 10%

- 1) Typ. operating range limit: max. attainable range without performance reserve
- 2) Operating range: recommended range with performance reserve
- 3) Average life expectancy 100,000h at an ambient temperature of 25°C
- 4) For UL applications: for use in class 2 circuits according to NEC only
- 5) The push-pull switching outputs must not be connected in parallel
- 6) Patent Pending Publ. No. US 7,476,848 B2
- 7) 2=polarity reversal protection, 3=short-circuit protection for all transistor outputs

Remarks

Adapter plate:

BT 3.2 (part no. 50103844) for alternate mounting on 25.4mm hole spacing (Omron E3Z, Sick W100...)

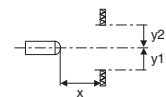
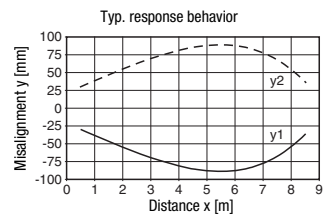


Tables

0	8,5	10
---	-----	----

	Operating range [m]
	Typ. operating range limit [m]

Diagrams



Remarks

A light axis consists of a transmitter and a receiver with the following designations:

- []LSR = Complete light axis
- LSSR = Transmitter
- []LSER = Receiver

Mounting system:



- ① = BT 3 (part no. 50060511)
- ②+③ = BT 3.1 ¹⁾ (part no. 50105585)
- ①+②+③ = BT 3B (part no. 50105546)

1) Packaging unit: PU = 10 pcs.

LSR 3B

Throughbeam photoelectric sensors

Order guide

Selection table			Order code →									
Equipment ↓			LSR 3B/66-S8 Part no. 50108508 (Tr) Part no. 50108510 (Tr) Part no. 50108514 (Re)	LSR 3B/66.8-S8 Part no. 50108509 (Tr) Part no. 50108514 (Re)	LSR 3B/66.1-S8 Part no. 50108508 (Tr) Part no. 50108515 (Re)	LSR 3B/66.8 Part no. 50108510 (Tr) Part no. 50108516 (Re)	ILSR 3B/4-S8 Part no. 50108508 (Tr) Part no. 50108517 (Re)	ILSR 3B/4,8,200-S8 Part no. 50108512 (Tr) Part no. 50108518 (Re)	LSR 3B/66.8,5000 Part no. 50108511 (Tr) Part no. 50108519 (Re)	LSR 3B/66.8,200-S12 Part no. 50111441 (Tr) Part no. 50111442 (Re)		
Output 1 (OUT 1)	push-pull switching output	light switching	○	●	●	●	●			●	●	
		dark switching	●									
	PNP transistor output	light switching	○				●	●				
		dark switching	●									
	NPN transistor output	light switching	○									
		dark switching	●									
Output 2 (OUT 2)	push-pull switching output	light switching	○	●	●	●	●			●	●	
		dark switching	●									
	PNP transistor output	light switching	○									
		dark switching	●									
	NPN transistor output	light switching	○									
		dark switching	●									
warning output (PNP transistor)	light switching	○				●	●					
Connection	cable 2,000mm	4-wire				●						
	M8 connector, metal	3-pin										
	M8 connector, metal	4-pin	●	●	●		●					
	M8 connector, metal, snap-on	4-pin										
	200mm cable with M8 connector	3-pin										
	200mm cable with M8 connector	4-pin						●				
	200mm cable with M12 connector	4-pin								●		
Configuration	cable 5,000mm	4-wire							●			
	potentiometer, rotational angle approx. 250°		●	●		●	●	●	●	●		
Features	activation input			●		●		●	●	●		



● **Approved purpose:**

This product may only be used by qualified personnel and must only be used for the approved purpose. This sensor is not a safety sensor and is not to be used for the protection of persons.

