

LSR 46B

Throughbeam photoelectric sensor with alignment indicator

en 03-2011/01 50109623-01

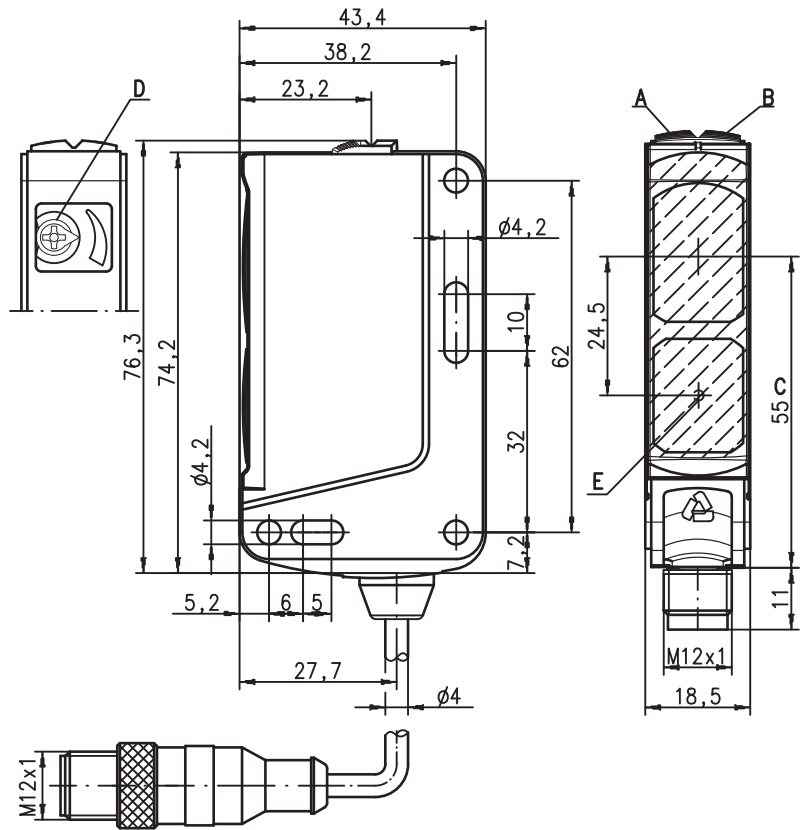


60m



- Throughbeam photoelectric sensor with visible red light
- Fast alignment through *brightVision*®
- Indicator for fast, precise alignment
- Push-pull switching outputs
- Sensitivity adjustment
- Warning output - for increased availability
- Further options for adapting to the respective application

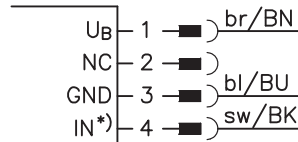
Dimensioned drawing



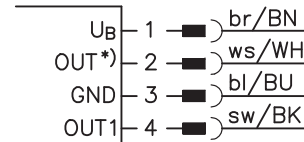
- A** Green indicator diode
- B** Yellow indicator diode
- C** Optical axis
- D** Optional sensitivity adjustment (only at receiver)
- E** Indicator diode for alignment control

Electrical connection

Transmitter, connector 4-pin



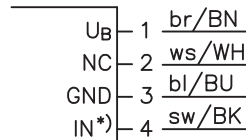
Receiver, connector 4-pin



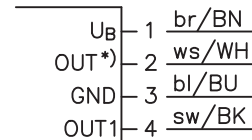
Selection pin 2/4

*)	OUT	IN
	OUT 2	active
	warn	
	NC	

Transmitter, cable



Receiver, cable



Accessories:

(available separately)

- Mounting systems (BT 46, BT 46.1, BT 46.1.5, BT 46.2)
- M12 connectors (KD ...)
- Ready-made cables (K-D ...)
- Alignment aid (SAT 5)

We reserve the right to make changes • DS_LSR_46B_en.fm

Specifications

Optical data

Typ. operating range limit ¹⁾	60m
Operating range ²⁾	50m
Light source ³⁾	LED (modulated light)
Wavelength	620nm (visible red light, polarized)

Timing

Switching frequency	500Hz
Response time	1 ms
Delay before start-up	≤ 300ms

Electrical data

With transistor switching outputs

Operating voltage U_B ⁴⁾	10 ... 30VDC (incl. residual ripple)
Residual ripple	≤ 15% of U_B
Open-circuit current	≤ 20mA
Switching output ⁵⁾	2 push-pull switching outputs
	pin 2: PNP dark switching, NPN light switching
	pin 4: PNP light switching, NPN dark switching
	1 warning output pin 2: PNP
	pin 4: PNP light switching
	≥ ($U_B - 2V$) / ≤ 2V
	max. 100mA

Signal voltage high/low	LSR .../66
Output current	LSR .../66.1
	ILSR .../4
	ILSR .../4.8

Indicators

Green LED	ready
Yellow LED	light path free
Yellow LED, flashing	light path free, no performance reserve

Mechanical data

Housing	plastic (PC-ABS)
Optics cover	plastic (PMMA)
Weight (with connector/with cable and conn.)	50g/65g
Connection type	M12 connector, or cable with M12 connector, cable length: 200mm

Environmental data

Ambient temp. (operation/storage)	-40°C ... +60°C / -40°C ... +70°C
Protective circuit ⁶⁾	2, 3
VDE safety class ⁷⁾	II, all-insulated
Protection class	IP 67, IP 69K
LED class	1 (acc. to EN 60825-1)
Standards applied	IEC 60947-5-2
Certifications	UL 508 ⁴⁾

Options

Warning output autoControl	PNP transistor, counting principle
Signal voltage high/low	≥ ($U_B - 2V$) / ≤ 2V
Output current	max. 100mA
Activation input active	
Transmitter active/not active	≥ 8V / ≤ 2V
Activation/disable delay	≤ 1ms
Input resistance	10kΩ ± 10%

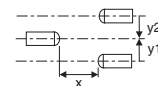
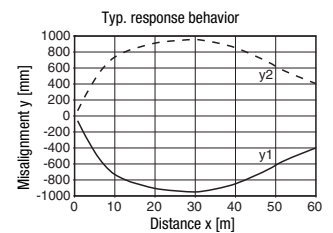
- 1) Typ. operating range limit: max. attainable range without performance reserve
- 2) Operating range: recommended range with performance reserve
- 3) Average life expectancy 100,000 h at an ambient temperature of 25°C
- 4) For UL applications: for use in class 2 circuits only
- 5) The push-pull switching outputs must not be connected in parallel
- 6) 2=polarity reversal protection, 3=short-circuit protection for all transistor outputs
- 7) Rating voltage 50V

Tables

0	50	60
---	----	----

	Operating range [m]
	Typ. operating range limit [m]

Diagrams



Remarks

A light axis consists of a transmitter and a receiver with the following designations:

- (I)LSR = complete light axis
- LSSR = transmitter
- (I)LSER = receiver

- **Approved purpose:**
This product may only be used by qualified personnel and must only be used for the approved purpose. This sensor is not a safety sensor and is not to be used for the protection of persons.
- **Alignment indicator:**
(‘E’ see dimensioned drawing)
Yellow LED =
light path free - with reserve
Yellow LED, flashing =
light path free - no performance reserve

LSR 46B

Throughbeam photoelectric sensor with alignment indicator

Order guide

The sensors listed here are preferred types; current information at www.leuze.com.

	Designation	Part no.
With M12 connector		
Complementary switching output	LSSR 46B-S12	50108526 (Tr)
	LSER 46B/66-S12	50108532 (R)
Activation input, complementary switching output	LSSR 46B.8-S12	50108527 (Tr)
	LSER 46B/66-S12	50108532 (R)
Warning output, display low performance reserve	LSSR 46B-S12	50108526 (Tr)
	ILSER 46B/4-S12	50108536 (R)
Sensitivity adjustment, complementary switching output	LSSR 46B-S12	50108526 (Tr)
	LSER 46B/66.1-S12	50108533 (R)
Cable with M12 connector		
Complementary switching output	LSSR 46B,200-S12	50108528 (Tr)
	LSER 46B/66,200-S12	50108534 (R)
Cable, cable length 2m		
Complementary switching output	LSSR 46B	50108529 (Tr)
	LSER 46B/66	50108535 (R)

Type key

L	S	E	R	4	6	B	/	6	6	D	.	1	-	S	1	2
---	---	---	---	---	---	---	---	---	---	---	---	---	---	---	---	---

Operating principle

LSSR	Throughbeam photoelectric sensor, transmitter with light visible red light
LSER	Throughbeam photoelectric sensor, receiver
ILSER	Throughbeam photoelectric sensor, receiver with warning output

Series

46B	46B Series
-----	------------

Switching output

/66	Complementary push-pull switching outputs
/4	Pin 4 PNP switching output, pin 2 no contact or warning output

Function characteristics

N/A	Pin 4 light switching; with push-pull, PNP light switching
D	Inverted switching logic

Special function

.8	Activation input (on transmitter)
.1	Sensitivity adjustment (on receiver)

Electrical connection

N/A	Cable, standard length 2000mm
,200-S12	Cable, length 200 mm with M12 connector
-S12	M12 connector

