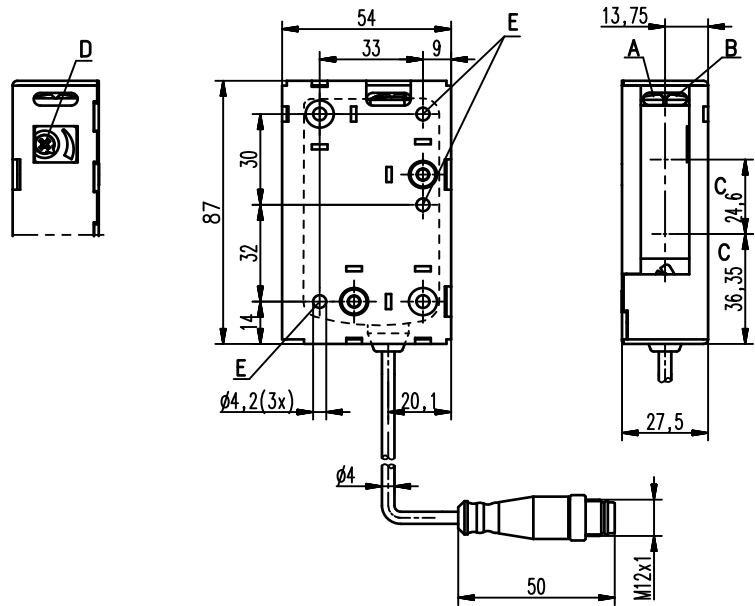


HRT 46B Ex n Diffuse reflection light scanner with background suppression

en 04-2013/05 50109199-01

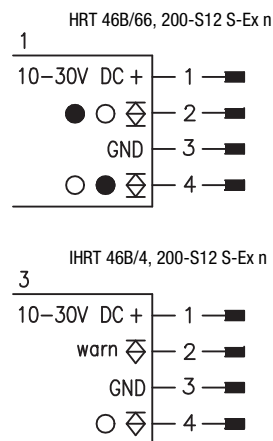


Dimensioned drawing

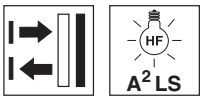


- A** Green indicator diode
- B** Yellow indicator diode
- C** Optical axis
- D** Scanning range adjustment
- E** Fastening hole

Electrical connection



0 ... 2,500mm
1,200mm with
black-white error < 10%



- Adjustable scanner with background suppression
- Reliable detection of light and dark, as well as inclined or sloped surfaces
- Exact scanning range adjustment through multiturn potentiometer
- Fast connection through Ultra-Lock™ fast locking
- Complementary switching outputs for optimal adaptation to the application
- Warning output - for increased availability
- A²LS - Active Ambient Light Suppression
- Ex II 3G Ex nA op is IIB T4 Gc X
- Ex II 3D Ex tc IIIC T90°C Dc IP67 X



Accessories:

- (available separately)
- Mounting systems (BT 46, BT 46.1, BT 46.1.5, BT 46.2)
 - M12 connectors (KD ...)
 - Ready-made cables (K-D ...)
 - Interlocking guard K-VM12-Ex (Part No. 501 09217)

We reserve the right to make changes • DS_HRT46BEx_en_50109199-01.fm

Specifications

Optical data

Typ. scanning range limit (white 90%)¹⁾
 Scanning range²⁾
 Adjustment range
 Light source³⁾
 Wavelength

Infrared light

0 ... 2,500mm
 see tables
 120 ... 2,500mm
 LED (modulated light)
 850nm

Timing

Switching frequency
 Response time
 Delay before start-up

transistor: 200Hz, relay: 20Hz
 transistor: 2.5ms, relay: 25ms
 ≤ 100ms

Electrical data

With transistor switching outputs

Operating voltage U_B ⁴⁾ 10 ... 30VDC (incl. residual ripple)
 Residual ripple ≤ 15% of U_B
 Open-circuit current ≤ 30mA
 Switching output .../66. ... 2 push-pull switching outputs⁵⁾
 .../44. ... pin 2: PNP dark switching, NPN light switching
 .../4. ... pin 4: PNP light switching, NPN dark switching
 .../4D. ... 2 PNP switching outputs
 .../4. ... pin 2: PNP dark switching, pin 4: PNP light switching
 .../4D. ... PNP switching output, pin 4: PNP light switching
 PNP switching output, pin 4: PNP dark switching

Signal voltage high/low
 Output current

≥ ($U_B - 2V$) ≤ 2V
 max. 100mA

With relay switching output

Operating voltage U_B ⁴⁾ 24VDC ± 10%
 Open-circuit current ≤ 40mA
 Switching output .../7. ... relay, make-contact between pin 2 and pin 4, light switching⁶⁾
 Switching voltage 30VAC/DC, max. 200mA
 Switching power max. 6VA, cos φ = 1

Indicators

Green LED ready
 Yellow LED reflection
 Yellow LED, flashing reflection, no performance reserve

Mechanical data

Housing⁷⁾/ optics cover plastic / plastic
 Weight 50g (with connector) / 65g (with cable and conn.)
 Connection type cable with M12 connector, cable length: 200mm

Environmental data

Ambient temp. (operation/storage) -30°C ... +60°C / -30°C ... +70°C
 Protective circuit⁸⁾ 2, 3
 VDE safety class⁹⁾ II, all-insulated
 Protection class IP 67, IP 69K
 LED class 1 (in accordance with EN 60825-1)
 Standards applied IEC 60947-5-2

Explosion protection

Certification (CENELEC) Ex II 3G Ex nA op is IIB T4 Gc X
 Ex II 3D Ex tc IIIC T90°C Dc IP67 X

Options

Warning output autoControl warn PNP transistor, counting principle
 Signal voltage high/low ≥ ($U_B - 2V$) ≤ 2V
 Output current max. 100mA

- 1) Typ. scan. range limit: max. achievable scanning range for light objects (white 90%)
- 2) Scanning range: recommended scanning range for objects with different diffuse reflection
- 3) Average life expectancy 100,000 h at an ambient temperature of 25°C
- 4) For UL applications: for use in class 2 circuits only
- 5) The push-pull switching outputs must not be connected in parallel
- 6) Suitable spark extinction must be provided with inductive or capacitive loads
- 7) Model "S"=standard housing, model "W"= with lateral flange
- 8) 2=polarity reversal protection, 3=short circuit protection for all outputs
- 9) Rating voltage 50VAC

Order guide

Connection diagram no.

Designation

Part no.



Cable with M12 connector, length: 200mm

Complementary push-pull switching output

Housing model S (standard) 1 HRT 46B/66, 200-S12 S-Ex n 50108587

PNP switching output light switching, warning output

Housing model S (standard) 3 IHRT 46B/4, 200-S12 S-Ex n 50108943

Complementary switching output + operating range adjustment

Housing model S (standard) IHRT 46B/4.01, 200-S12 S-Ex n 50112802

HRT 46B/66, 200-S12 S-Ex n - 04

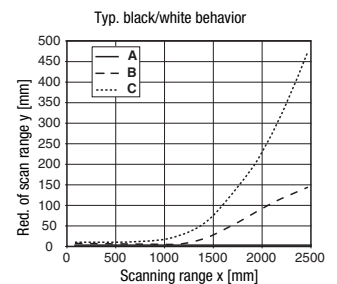
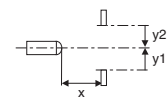
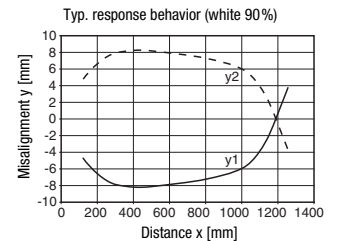
Tables

1	0	2,500
2	5	1,800
3	10	1,200

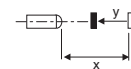
1	white 90%
2	gray 18%
3	black 6%

Scanning range [mm]

Diagrams



- A white 90%
- B gray 18%
- C black 6%



Remarks

- **Approved purpose:**
 This product may only be used by qualified personnel and must only be used for the approved purpose. This sensor is not a safety sensor and is not to be used for the protection of persons.
- With the set scanning range, a tolerance of the upper scanning range limit is possible depending on the reflection properties of the material surface.

Ex devices

Notices for the safe use of sensors in potentially explosive areas

This document is valid for devices with the following classifications:

Device group	Device category	Equipment protection level	Zone
II	3G	Gc	Zone 2
II	3D	Dc	Zone 22



Attention!

- Check whether the equipment classification corresponds to the requirements of the application.
- The devices are not suited for the protection of persons and may not be used for emergency shutdown purposes.
- A safe operation is only possible if the equipment is used properly and for its intended purpose.
- Electrical equipment may endanger humans and (where applicable) animal health, and may threaten the safety of goods if used incorrectly or under unfavorable conditions in potentially explosive areas.
- The applicable national regulations (e.g. EN 60079-14) for the configuration and installation of explosion-proof systems must be observed without fail.

Installation and Commissioning

- The devices must only be installed and commissioned by trained electricians. They must be aware of the regulations and operation of explosion-proof equipment.
- To prevent unintentional separation under voltage, devices with connector (e.g. Series 46B) must be equipped with a safeguard or a mechanical interlocking guard (e.g. K-VM12-Ex, part no. 50109217). The warning sign "Do not disconnect under voltage" that is supplied with the device must be attached to the sensor or its mounting bracket so that it is clearly visible.
- Devices with terminal compartment lid (e.g. Series 96) must only be commissioned if the terminal compartment lid of the device is properly sealed.
- Connection cables and connectors must be protected from excessive or unintended pulling or pushing strain.
- Prevent dust deposits from forming on the devices.
- Metallic parts (e.g. housing, mounting devices) are to be integrated into the potential equalization to prevent electrostatic charge.

Maintenance

- No changes may be made to explosion-proof devices.
- Repairs may only be performed by a person trained for such work or by the manufacturer.
- Defective devices must be replaced immediately.
- Cyclical maintenance is generally not necessary.
- Depending on the environmental conditions, it may occasionally be necessary to clean the optical surfaces of the sensors. This cleaning must only be performed by persons trained for this task. We recommend using a soft, damp cloth. Cleaning agents that contain solvents must not be used.

Chemical resistance

- The sensors demonstrate good resistance against diluted (weak) acids and bases.
- Exposure to organic solvents is possible only under certain circumstances and only for short periods of time.
- Resistance to chemicals must be examined on a case by case basis.

Special conditions

- The devices must be installed in such a way that they are protected from direct exposure to UV rays (sunlight).
- Static charge on plastic surfaces must be avoided.



the **sensor** people

**EG-KONFORMITÄTS-
ERKLÄRUNG**

**EC DECLARATION
OF CONFORMITY**

**DECLARATION CE
DE CONFORMITE**

Der Hersteller

The Manufacturer

Le constructeur

**Leuze electronic GmbH + Co. KG
In der Braike 1, PO Box 1111
73277 Owen, Germany**

erklärt, dass die nachfolgend aufgeführten Produkte den einschlägigen Anforderungen der genannten EG-Richtlinien und Normen entsprechen.

declares that the following listed products fulfil the relevant provisions of the mentioned EC Directives and standards.

déclare que les produits identifiés suivants sont conformes aux directives CE et normes mentionnées.

Produktbeschreibung:

Description of product:

Description de produit:

**Reflexions-Lichttaster mit
Hintergrundausbldung
(I)HRT(R) 46B/...S-Ex n**

**Diffuse reflection light scanner
with background suppression
(I)HRT(R) 46B/... S-Ex n**

**Cellule reflea à détection
directe avec élimination de
l'arrière-plan
(I)HRT(R) 46B/... S-Ex n**

Kennzeichnung Gas / Staub:

Marking for gas / dust:

Marquage gaz / poussière:

 II 3G Ex nA op is IIB T4 Gc X

/  II 3D Ex tc IIIC T90° C Dc IP67 X

Angewandte EG-Richtlinie(n):

Applied EC Directive(s):

Directive(s) CE appliquées:

**94/9/EG
2004/108/EG**

**94/9/EC
2004/108/EC**

**94/9/CE
2004/108/CE**

Angewandte Normen:

Applied standards:

Normes appliquées:

**EN 60079-0: 2009
EN 60079-28: 2007
EN 609478-5-2: 2007**

**EN 60079-15: 2005
EN 60079-31: 2009**

22.3.2010

Datum / Date / Date



Ulrich Balbach, Geschäftsführer / Director / Directeur

Leuze electronic GmbH + Co. KG
In der Braike 1
D-73277 Owen
Telefon +49 (0) 7021 573-0
Telefax +49 (0) 7021 573-199
info@leuze.de
www.leuze.com

LEO-ZQM-149-02-FO

Leuze electronic GmbH + Co. KG, Sitz Owen, Registergericht Stuttgart, HRA 230712
Persönlich haftende Gesellschafterin Leuze electronic Geschäftsführungs-GmbH,
Sitz Owen, Registergericht Stuttgart, HRB 230550
Geschäftsführer: Ulrich Balbach, Dr. Matthias Kirchherr
USt-IdNr. DE 145912521 | Zollnummer 2554232
Es gelten ausschließlich unsere aktuellen Verkaufs- und Lieferbedingungen
Only our current Terms and Conditions of Sale and Delivery shall apply