

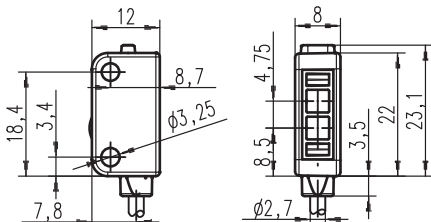
## Text field ①

Part No. Text field ②

## Miniature light scanners with background blanking



### Dimensioned drawing



### Text field ③

### Electrical connection



10 - 30 V  
DC



10-30V DC +	1	br/BN
GND	2	bl/BU
OUT 1	4	sw/BK

### Specifications

Scanning range	Text field ③
Light beam characteristic	Text field ④
Operating voltage $U_B$	10 ... 30VDC
Switching output <sup>1)</sup>	OUT1 (pin 4): NPN
Output current	50mA (per output and total)
Function .../2	OUT1: switching
Connection type	150 mm cable with M8 connector, 3-pin
Switching frequency	700Hz
Ambient temperature	-20 ... +55 °C (operation)
Protection class	IP 67

1) Bipolar transistor, open collector

### ● Approved purpose

The light scanners are optical electronic sensors for optical, contactless detection of objects.

This product may only be used by qualified personnel and must only be used for the approved purpose. This sensor is not a safety sensor and is not to be used for the protection of persons.

## Barcode ID



Detailed data sheets:  
[www.leuze.com](http://www.leuze.com)



ISO 9001

